

Box, outlet and cover
(supplied by others)

Power Cord:

- 6' 7" Power Cord 110 VAC (supplied by Nevco)
- Optional 15' Power Cord (009-0324) available from Nevco
- Optional 6' 7" Power Cord 220 VAC (009-0257) available from Nevco

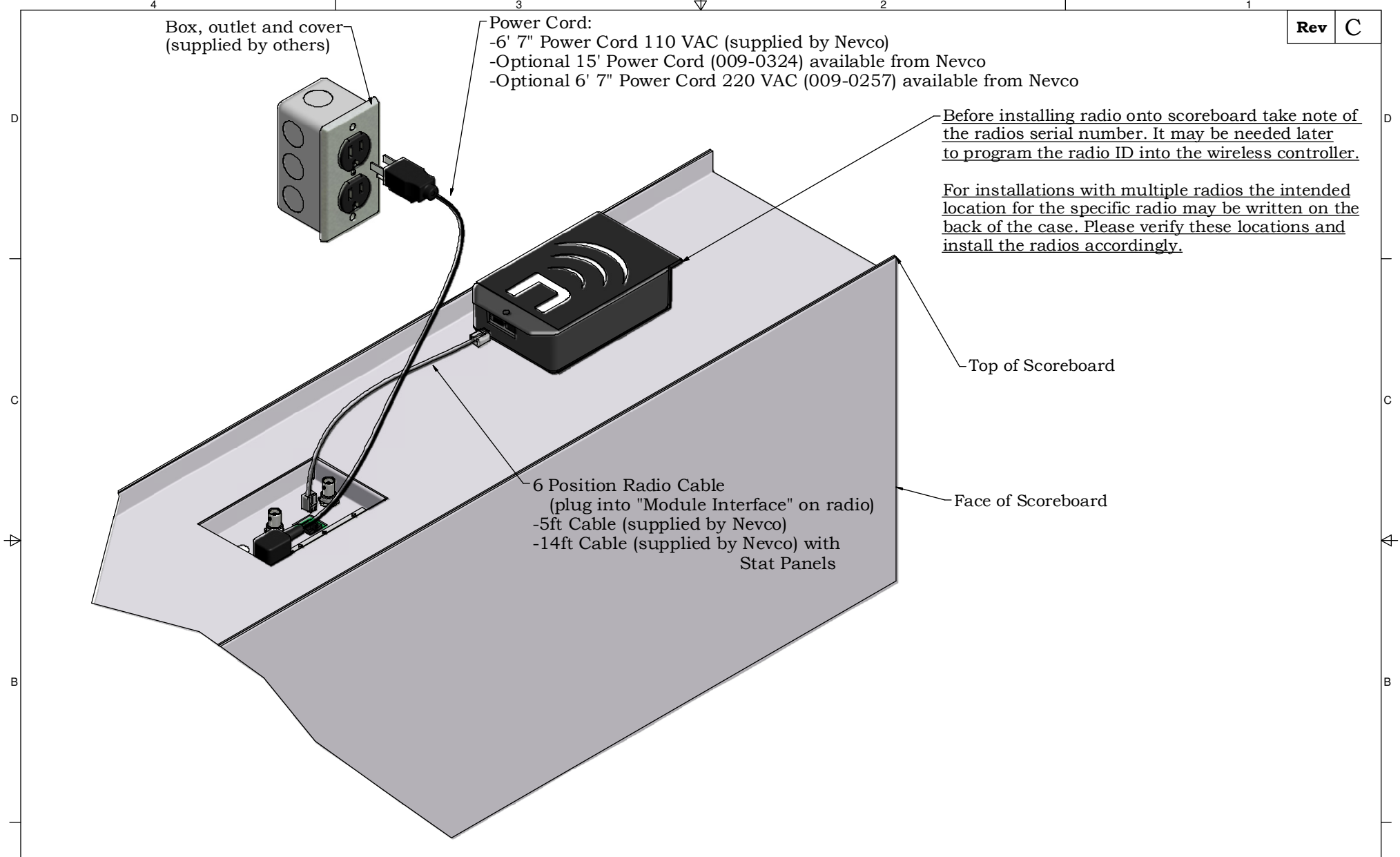
Before installing radio onto scoreboard take note of the radios serial number. It may be needed later to program the radio ID into the wireless controller.

For installations with multiple radios the intended location for the specific radio may be written on the back of the case. Please verify these locations and install the radios accordingly.

Top of Scoreboard

Face of Scoreboard

6 Position Radio Cable
(plug into "Module Interface" on radio)
-5ft Cable (supplied by Nevco)
-14ft Cable (supplied by Nevco) with
Stat Panels



Note:
-This scoreboard is intended to be installed in accordance with the requirements of Article 600 of the National Electrical Code and/or other applicable local codes. This includes proper grounding and bonding of the scoreboard.

-For power requirements see the scoreboard installation print for the model of scoreboard being installed

Indoor Installation
MPCW Series 7
Wireless Receiver
(Top Mount)



Nevco, Inc.
Greenville, Illinois 62246

Drawing No. 275-0166

Drawn MMK

Date 2/25/13

Sheet 1 of 1