

DIMENSIONS AND SPECIFICATIONS

Model	WIDTH	ADD-ON HEIGHT	WEIGHT	DIM "A"	DIM "B"	Std. Instal Print
5633	18'	2' 3/16"	120	4'	10'	241-0347

General Notes:

1. See standard installation print for column and pier depth requirements.
3. Minimum bolt grade: A307
4. All welds to conform to AWS standards

Required Hand Tools:

1. Phillips head screw driver/drill with phillips driver.
2. 9/16" wrench
3. Ratchet wrench and 9/16" socket
4. Level
5. Tape measure

Important. Read before installation.

This is not an engineered drawing. It is intended for representational purposes only. The dimensions called out on this drawing are intended to be used as a guide only, and are not intended to be suitable for all conditions. Adding signs or other components around the scoreboard beyond the scope of this drawing or increasing the display height from the ground will affect the installation requirements. Nevco recommends that you consult a professional engineer or architect familiar with the area before attempting installation. They can verify that the selected mounting beams or posts along with the brackets, screws, and other hardware items provided by others or Nevco are adequate for your local soil conditions, wind loads and other local codes. If procedures are used that are not covered in this drawing, careful analysis of the installation is urged.

Outdoor Scoreboard
Installation
2 Column
Multi-Section

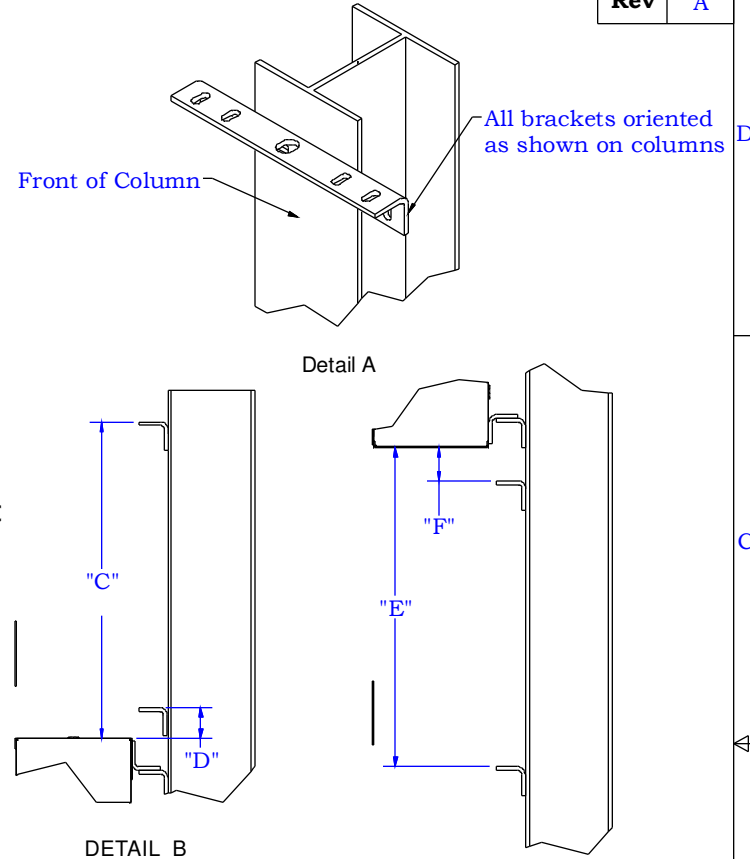
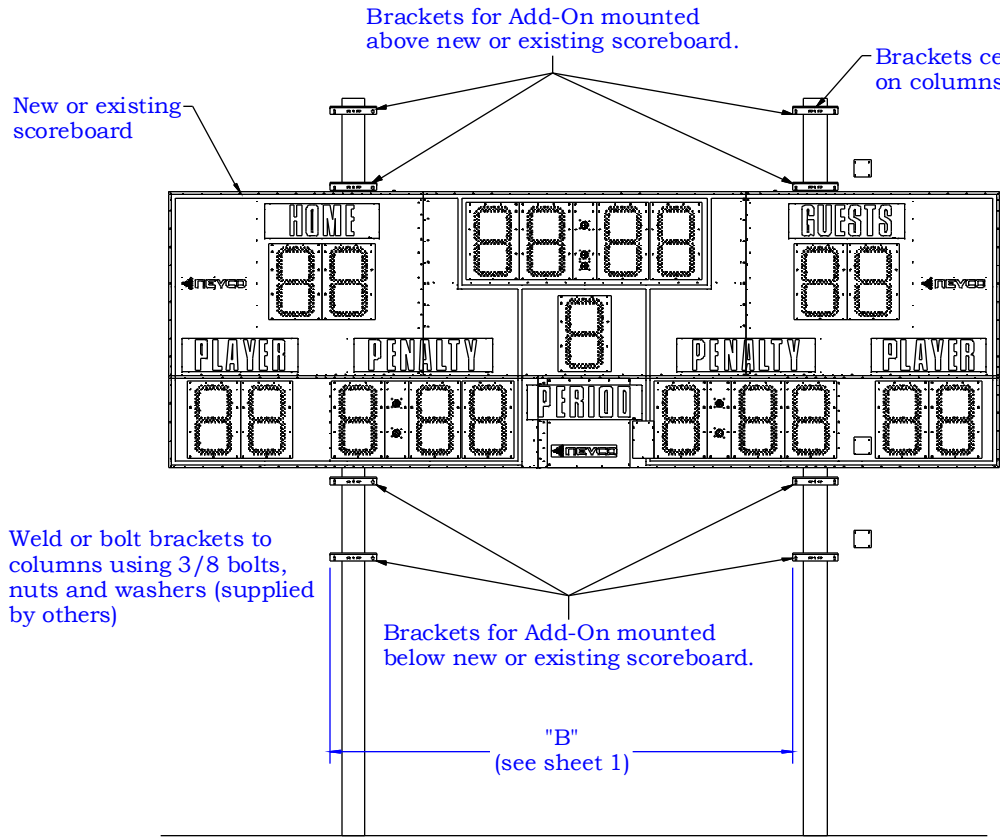


Nevco, Inc.
Greenville, Illinois 62246

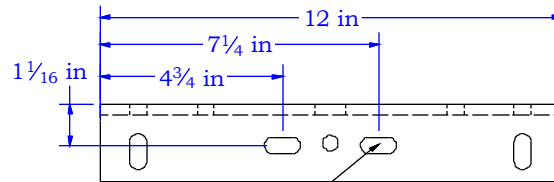
Drawing No. 241-0364

Drawn DBB Date 10/29/2013

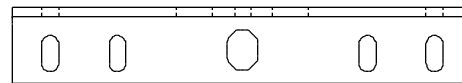
Sheet 1 of 4



Model #	Dim "C"	Dim "D"	Dim "E"	Dim "F"
5633	22"	2 1/8"	22 1/4"	2 3/8"



Slots for bolting to column.

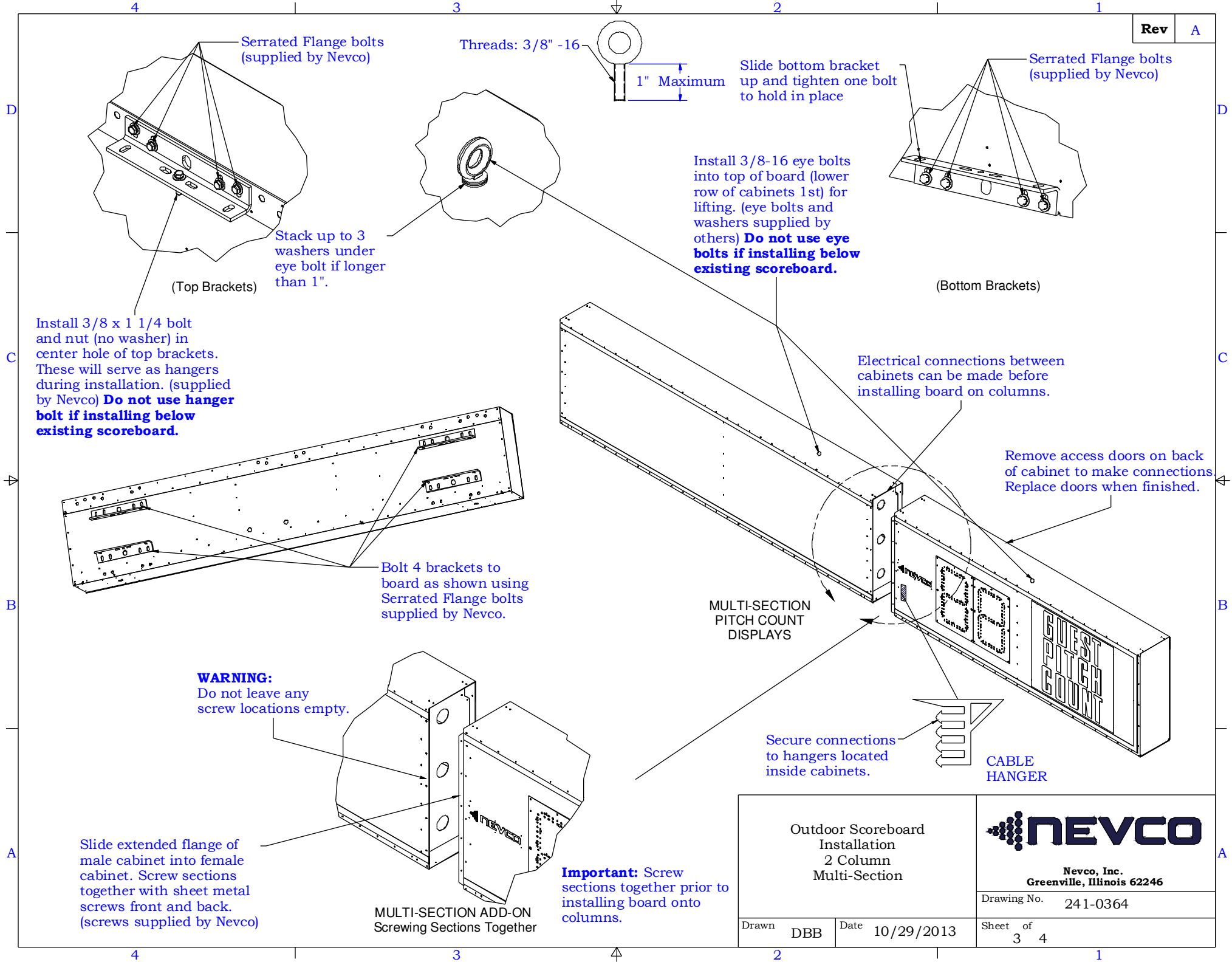


BRACKET DETAIL

HARDWARE SUPPLIED BY OTHERS	
Description	Quantity
3/8 x 1 1/2 Bolt	8
3/8 Flat Washer	16
3/8 Lock Washer	8
3/8 Nut	8
3/8-16 eye bolts (see sheet 4)	2

- Notes:
- 1) If welding brackets to columns, weld around full contact surface of brackets.
 - 2) **FOR HIGH WIND AREAS:** For installations in wind zones higher than 150 mph, brackets must be welded to columns.
 - 3) Brackets shipped in separate container.

Outdoor Scoreboard Installation 2 Column Multi-Section		<p>Neveco, Inc. Greenville, Illinois 62246</p>
Drawing No. 241-0364		
Drawn DBB	Date 10/29/2013	Sheet of 4



Serrated Flange bolts (supplied by Nevco)

Threads: 3/8" -16

1" Maximum

Slide bottom bracket up and tighten one bolt to hold in place

Serrated Flange bolts (supplied by Nevco)

Stack up to 3 washers under eye bolt if longer than 1".

Install 3/8-16 eye bolts into top of board (lower row of cabinets 1st) for lifting. (eye bolts and washers supplied by others) **Do not use eye bolts if installing below existing scoreboard.**

Install 3/8 x 1 1/4 bolt and nut (no washer) in center hole of top brackets. These will serve as hangers during installation. (supplied by Nevco) **Do not use hanger bolt if installing below existing scoreboard.**

Electrical connections between cabinets can be made before installing board on columns.

Remove access doors on back of cabinet to make connections. Replace doors when finished.

Bolt 4 brackets to board as shown using Serrated Flange bolts supplied by Nevco.

MULTI-SECTION PITCH COUNT DISPLAYS

WARNING: Do not leave any screw locations empty.

Secure connections to hangers located inside cabinets.

CABLE HANGER

Slide extended flange of male cabinet into female cabinet. Screw sections together with sheet metal screws front and back. (screws supplied by Nevco)

MULTI-SECTION ADD-ON Screwing Sections Together

Important: Screw sections together prior to installing board onto columns.

Outdoor Scoreboard Installation
2 Column
Multi-Section



Nevco, Inc.
Greenville, Illinois 62246

Drawing No. 241-0364

Drawn DBB

Date 10/29/2013

Sheet of 3 4

Lift using eye bolts (spreader bar preferred; see installation instructions for more details)

WARNING:
Do not lift cabinets with any other additional weight attached such as laterals or other structural components

Optional: If not mounting with an existing scoreboard, mount Add-On first. This allows use of eye bolts for lifting.

Do not use eye bolts to lift.

1/8" gap between Add-On and scoreboard

1/8" gap between Add-On and scoreboard

MOUNTING ADD-ON ABOVE SCOREBOARD

MOUNTING ADD-ON BELOW SCOREBOARD

Add-On

Important: Bolt serves as hanger only. 2 additional bolts still required to bolt brackets together.

Bolt installed in top brackets serve as hanger.

2 bolts required per bracket set.

Important: Do not use hanger bolt if installing below existing scoreboard.

Column

Hanging Detail

Bolt brackets together using 3/8 x 1 3/4 bolts, nuts, washers and lock washers supplied by Nevco. (2 bolts required)

Column

Cabinet Top

Add On

Scoreboard


Add On

Column

Cabinet Bottom

Bracket orientation typical for mounting Add On below.

Scoreboard not shown for clarity

Outdoor Scoreboard Installation 2 Column Multi-Section		 Nevco, Inc. Greenville, Illinois 62246	
Drawn DBB		Date 10/29/2013	Drawing No. 241-0364
		Sheet 4 of 4	