

Signal Strength Meter

Point client bridge at access point in control room to obtain required signal strength.

3 bars required for adequate signal

Sign Power Connections

- Black Line
 - White Neutral
 - Green Ground
- Wirenuts Provided

Grounded pigtail located inside 2x4 box. Must connect when connecting power.

Make connections by removing other access panel near Power/Signal-In panel. Replace all covers when connections have been made.

Feed panel through hole as shown to change location of access panels.

Power/Signal-In panel can be relocated to side, bottom or back of message centers for wall mount or adjacent signs.

Note: It is not necessary to remove message center display panels to make any connections.

National Electric code requires a disconnect switch within Sight of the sign or lockable within the building. If neither is available, install a disconnect at the sign.

Important. Read before installation.
 Power entrances are located on access panels with 2x4 box. The location of this panel may vary between different message centers. Access panels can be swapped to allow placement of incoming power/signal on the side, back or bottom of the message center typically. This sign is intended to be installed in accordance with the requirements of Article 600 of the National Electrical Code and/or other applicable local codes. This includes proper grounding and bonding of the sign. All personnel who work with electrical connections must be educated in the safe procedures for installing and repairing electrical connections before they are given the responsibility of performing such tasks. Conduit and fittings are supplied by installer.

Note: For indoor installations, a raintight box is not required. Make connections same as above.

Message Center Wireless Installation



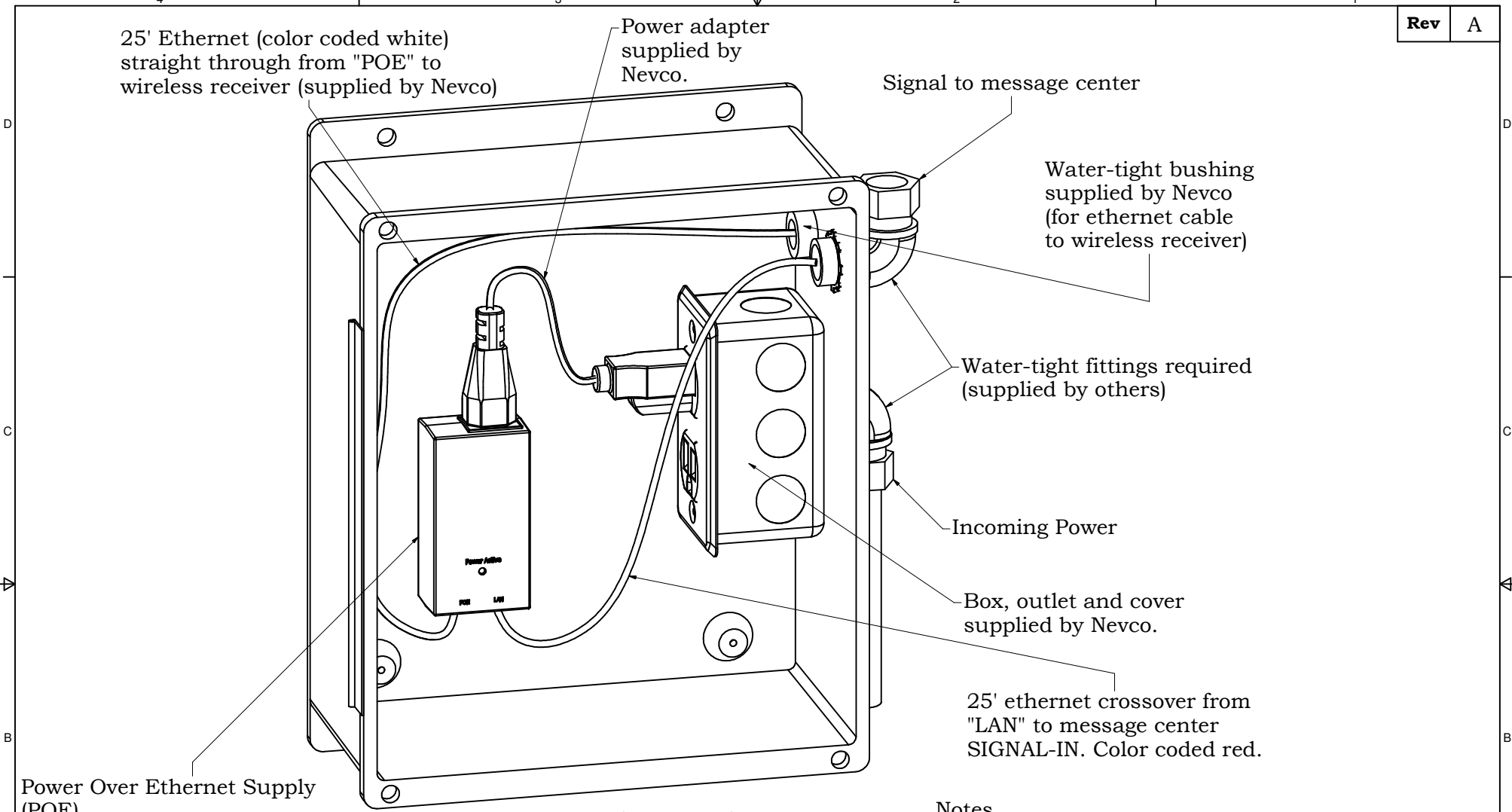
Neveco, Inc.
 Greenville, Illinois 62246

Drawing No. 275-0567

Drawn DBB

Date 04/06/11

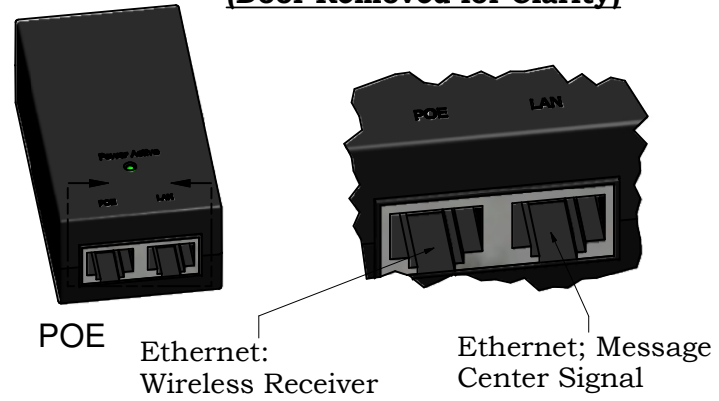
Sheet 1 of 6




Power Over Ethernet Supply (POE)

- Mounting POE:
1. Cut supplied adhesive-backed fastening material into (2) 2" pieces.
 2. Peel backing off of one piece and place on back of raintight box in desired location.
 3. Place second piece on back of POE.
 4. Press POE firmly onto back of raintight box.

**Inside Raintight Box
(Door Removed for Clarity)**



- Notes.
1. Use raintight fittings.
 2. Indoor installations do not require a rain-tight box. Make connections same as above.

Message Center Wireless Installation		 Nevco, Inc. Greenville, Illinois 62246	
Drawing No. 275-0567		Sheet 2 of 6	
Drawn DBB	Date 04/06/11		

Temperature Sensor Photo Cell

- 1) Place in a discrete location.
- 2) Do not completely enclose the sensor box.
- 3) Placing the sensors in direct sunlight can elevate the temperature readings.

Note: It is not necessary to remove display panels to make any connections.

Connect cable from sensor to Temp. Sensor Photo Cell cable located behind Power/Signal-In access panel. Install through supplied bushing.

* Connections can be made using 1/2 conduit.

Power to 2x4 box.


*** Power/Signal-In Access Panel**

Remove knockout on panel here to make connection.

Signal-In

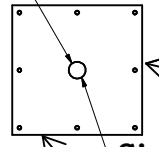
- cross over ethernet from POE
- remove knockout label 'Signal In' on panel to make connection

Remove other access panel to make connections and replace when finished. Wires for connections located inside cabinet.

Message Center Wireless Installation		 <p>Neveco, Inc. Greenville, Illinois 62246</p>
Drawn DBB	Date 04/06/11	Sheet 3 of 6

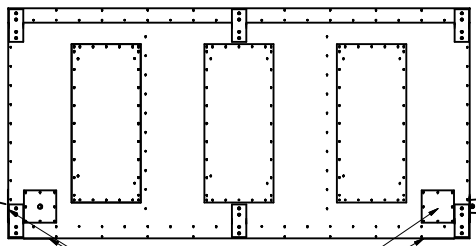
Single Cabinet Message Center

For double sided message centers, connect cable here and run straight through to Signal-In of second message center.

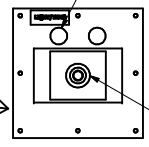


Signal Out
(remove plug or knockout to make connection)

Access panels can be moved to different locations.



Temperature Sensor/ Photo Cell

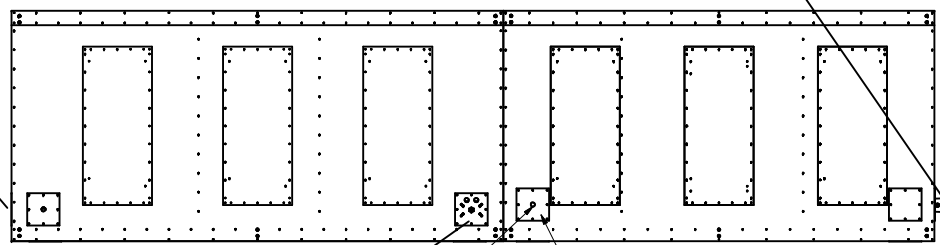


Power

Power/Signal-In Panel

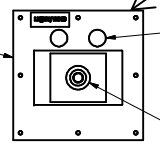
Note: Remove knockouts in access panels where necessary to make connections.

Double Cabinet Message Center



Signal-Out

Remove panel and re-mount according to label with 2x4 box on outside of cabinet.

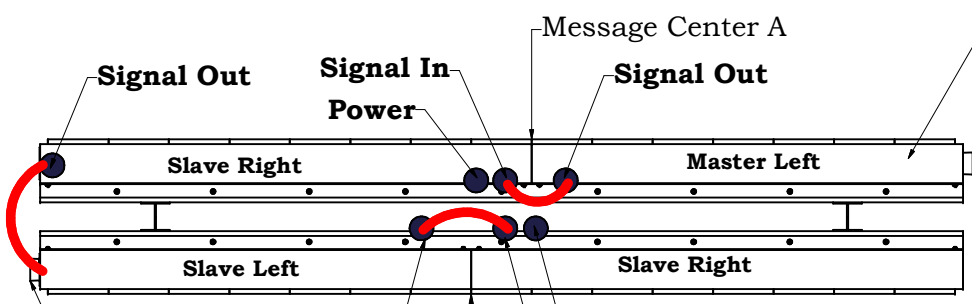


Power

Connect ethernet from Signal-Out of first cabinet straight through to Signal-In of second cabinet.

Power/Signal-In Panel

Double Cabinet Double Sided Message Center



Cabinet 1 is labeled "Master"

Power, Signal
(ethernet connection from POE)

Important. Read before installation.
Power entrances are located on access panels with 2x4 box. The location of this panel may vary between different message centers. Access panels can be swapped to allow placement of incoming power/signal on the side, back or bottom of the message center typically. This sign is intended to be installed in accordance with the requirements of Article 600 of the National Electrical Code and/or other applicable local codes. This includes proper grounding and bonding of the sign. All personnel who work with electrical connections must be educated in the safe procedures for installing and repairing electrical connections before they are given the responsibility of performing such tasks. Conduit and fittings are supplied by installer.

Power, Signal In

Signal Out

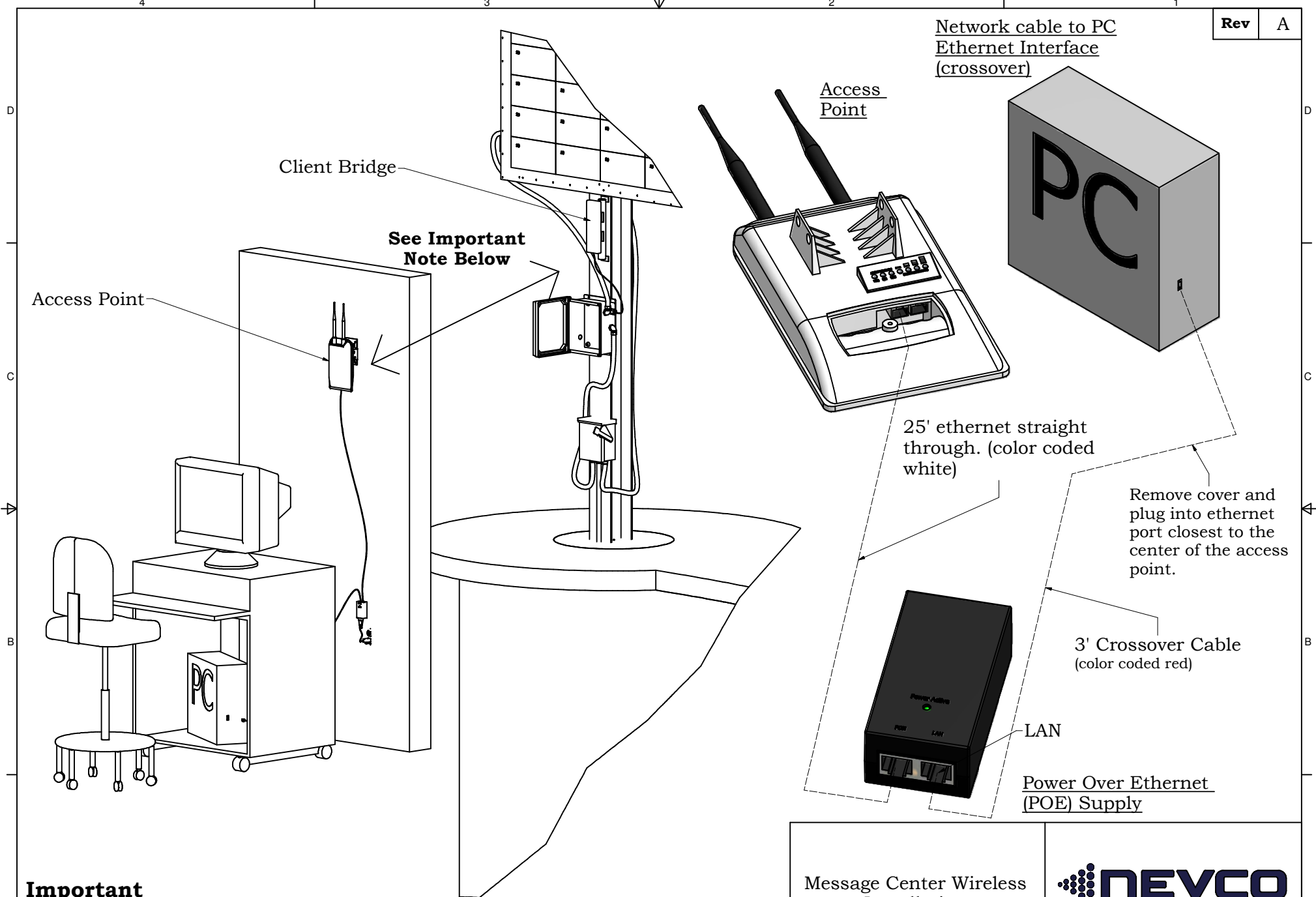
Power

Signal In

Message Center B


Note: Cabinet to cabinet signal connections are straight through ethernet.

Message Center Wireless Installation			
		Nevco, Inc. Greenville, Illinois 62246	
		Drawing No. 275-0567	
Drawn DBB	Date 04/06/11	Sheet 4 of 6	

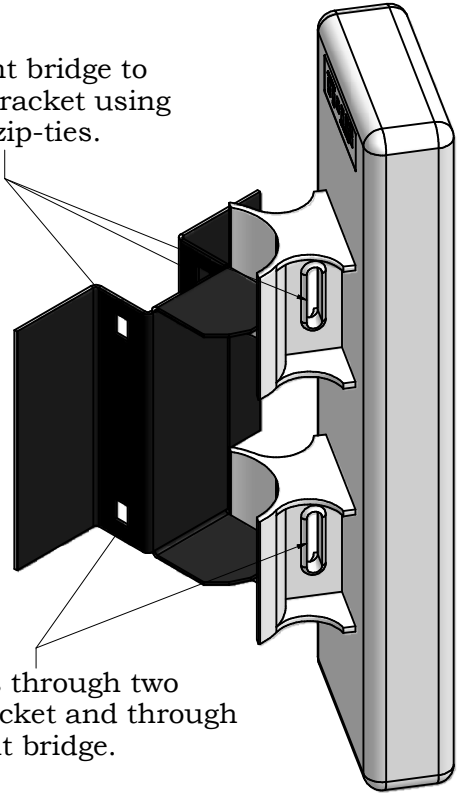


Important

Wireless devices should be in Clear Line of Sight from each other. Penetration of obstacles by the wireless signal is dependant on the material of the obstacle as well as the overall distance between devices. Both units are suitable for outdoor installation. If building walls become a problem, mount the access point outside the building.

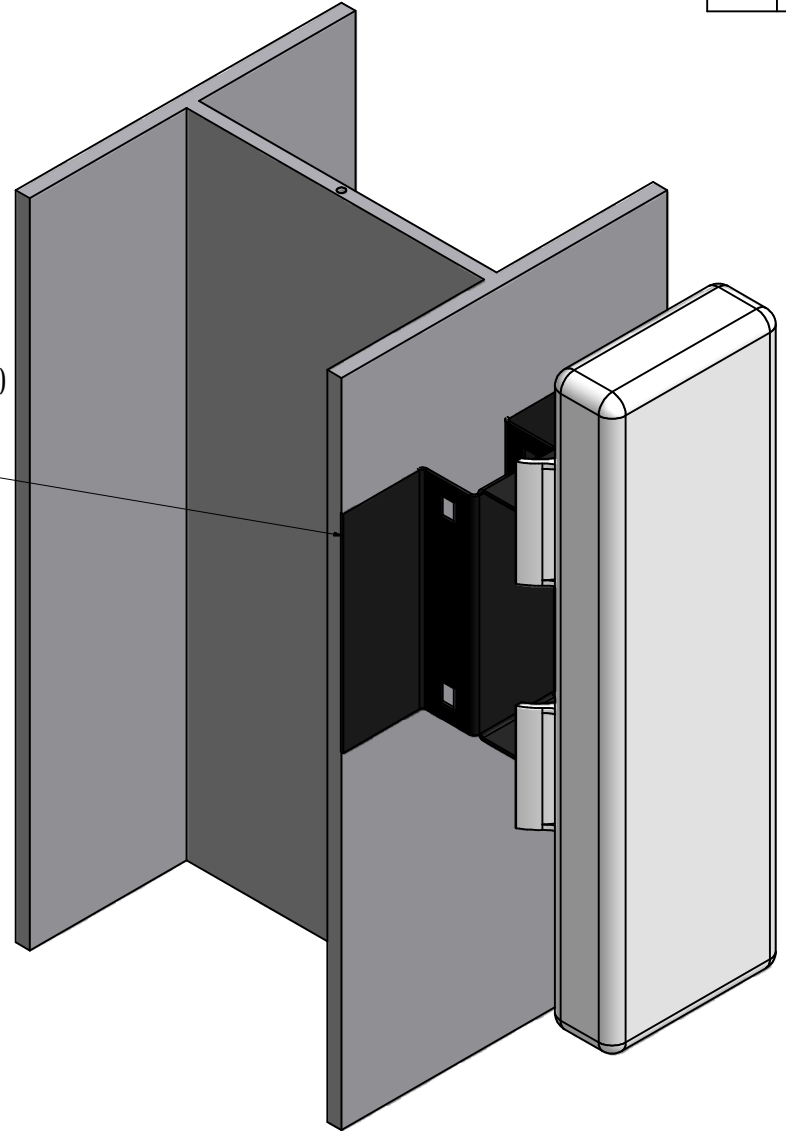
Message Center Wireless Installation		 Nevco, Inc. Greenville, Illinois 62246
Drawn DBB	Date 04/06/11	
		Sheet 5 of 6

Fasten client bridge to mounting bracket using 2 supplied zip-ties.

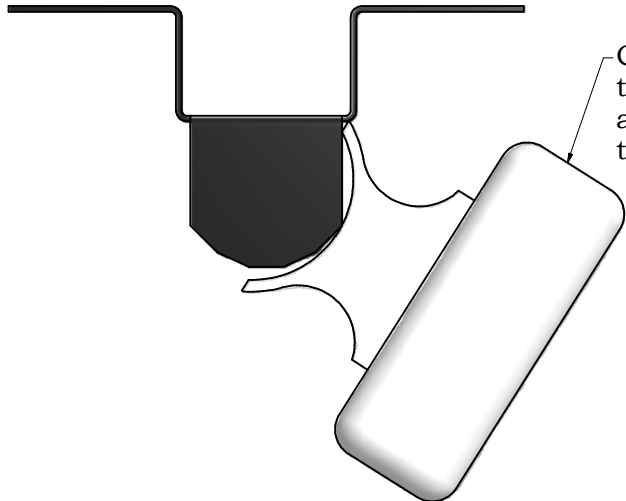


Run zip-ties through two holes in bracket and through slot on client bridge.

Bolt or clamp bracket to column or other structure. (hardware supplied by others)



Client bridge can be mounted to bracket at various angles to achieve optimum line of sight to access point in control room.



Message Center Wireless Installation



Nevco, Inc.
Greenville, Illinois 62246

Drawing No. 275-0567

Drawn DBB

Date 04/06/11

Sheet 6 of 6