

# MODEL MPCW-7

**Size:** 11" x 9.5" x 4.125" (.28 x .24 x .10 m)

**Approximate weight:** 3.35 lbs. (1.5 kg)

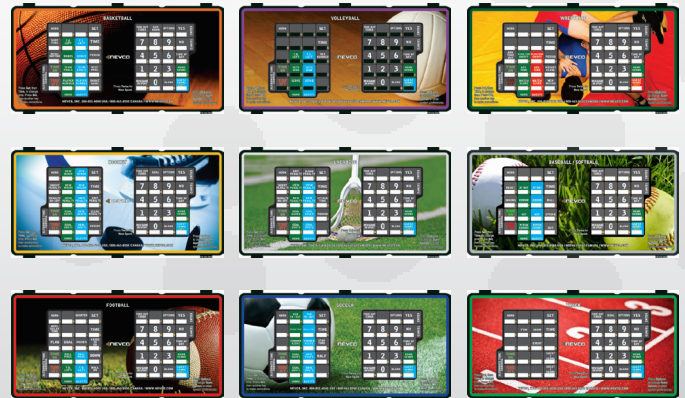
**Display:** Bright LED **Keypad:** Split and raised 40 key keyboard



### Advanced universal wireless control featuring:

- One control can be used for up to 40 wireless scoreboards
- High Impact Black Plastic.
- Improved UV resistance.
- Sealed Keypad prevents liquids being spilled into the control.
- Durable rubber replaces the plastic push buttons.
- Backward compatible with most older scoreboards.
- Custom designed overlay featuring sport specific graphics.
- ETN entry can be done on any overlay through the option menu. (Many competitors require a separate PC for ETN entry)
- Rechargeable Battery option.
- Handheld switches included as required.
- Internal Antenna.
- High Brightness, illuminated LED display.

Easy to Read, sport specific Overlays



### Advanced Software features:

New Game, Horn Tone / Volume, Time Out time, Time of Day, Segment Timer & more.

**Combine your scoreboard with a Nevco monochrome or full-color message center to create a complete scoring and display system. Team/Sponsor signs also available.**



**BUILD YOUR OWN DISPLAY AND SCORING SYSTEM ONLINE AT:**

**WWW.NEVCO.COM**

**U.S. & CANADA: 800-851-4040 INTERNATIONAL: 618-664-0360**

**FAX: 618-664-0398 E-MAIL: INFO@NEVCO.COM**

# INTEGRATED DISPLAY AND SCORING SOLUTIONS

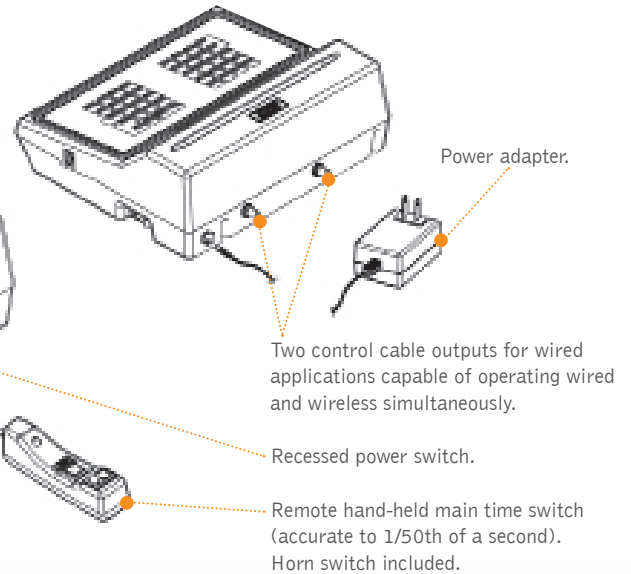
## Model MPCW-7 Operating Features

Alphanumeric LED display.

Operator keyboards.

Optional hand-held remote switch (will operate from either receptacle). Required for specific accessories.

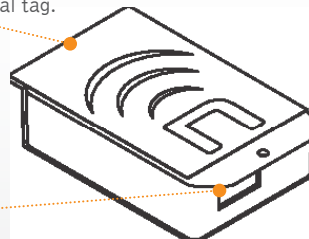
Changeable sport-specific overlay.



## MPCW Receiver

Informational tag.

Output jack to scoreboards.



### OPTIONAL CARRYING CASE AVAILABLE:

The CC-3 double wall carrying case is lightweight and durable, made of high density polyethylene. Size 18 1/2" x 14 1/2" x 6". Black textured finish resists dents and scuffs. Case features trouble-free mechanical latches and hinges. Padded case interior is large enough for Nevco MPCW control, hand-held switch, and 25' of scoreboard control cable.



### CERTIFICATIONS: FCC, CE, INDUSTRY CANADA.

**MPCW-7 CONTROL:** Microprocessor-based operator's control. Construction of black high impact break-resistant plastic, size 11" x 9 1/2" x 4 1/8" (.28 x .24 x .10 m). Includes: remote hand-held time switch accurate to 1/50th of a second, horn button included on time switch and keyboard overlay. Control features: bright LED display, lithium cell battery backup to maintain scoreboard memory and time of day, self test mode, power on-off switch, alternate time control, internal beeper acknowledging each entry, profile capabilities and multiple scoreboard operation. Capable of operating wireless or wired scoreboard systems.

**TIMERS:** For scoreboards with timers, additional features: time of day display, multiple time out timers with warning, interval horn, up-count auto stop with horn. 1/10th seconds are displayed during the last minute.

**RANGE:** Maximum range of 1,000 feet from control to receiver. (Clear Line of Sight)

**DIMMER:** Activated from control for scoreboard.

**POWER: WALL OUTLET POWER ADAPTER:** One required for each control and each receiver. Input: 100-240 Volts, .4 Amps, 50/60 Hz. Output: 9 volts, 1.67 Amps. Maximum 9 Volt output power 15 Watts.

**OPERATES MODELS:** All Nevco scoreboards except UltraScore, UltraWrestling, SEG-14, SEG-18, 9650, 9651 and 9652.

**GUARANTEE:** TO VIEW OR RECEIVE THE MOST RECENT COPY OF OUR GUARANTEE, PLEASE VISIT: [NEVCO.COM/WARRANTY-LIMITATION](http://NEVCO.COM/WARRANTY-LIMITATION)

**U.S. SERVICE: 1-800-851-4040**

**INTERNATIONAL SERVICE: 1-618-664-0360**

**CANADA SERVICE: 1-800-461-8550**



BUILD YOUR OWN DISPLAY AND SCORING SYSTEM ONLINE AT:

[WWW.NEVCO.COM](http://WWW.NEVCO.COM)

U.S. & CANADA: 800-851-4040 INTERNATIONAL: 618-664-0360

FAX: 618-664-0398 E-MAIL: [INFO@NEVCO.COM](mailto:INFO@NEVCO.COM)