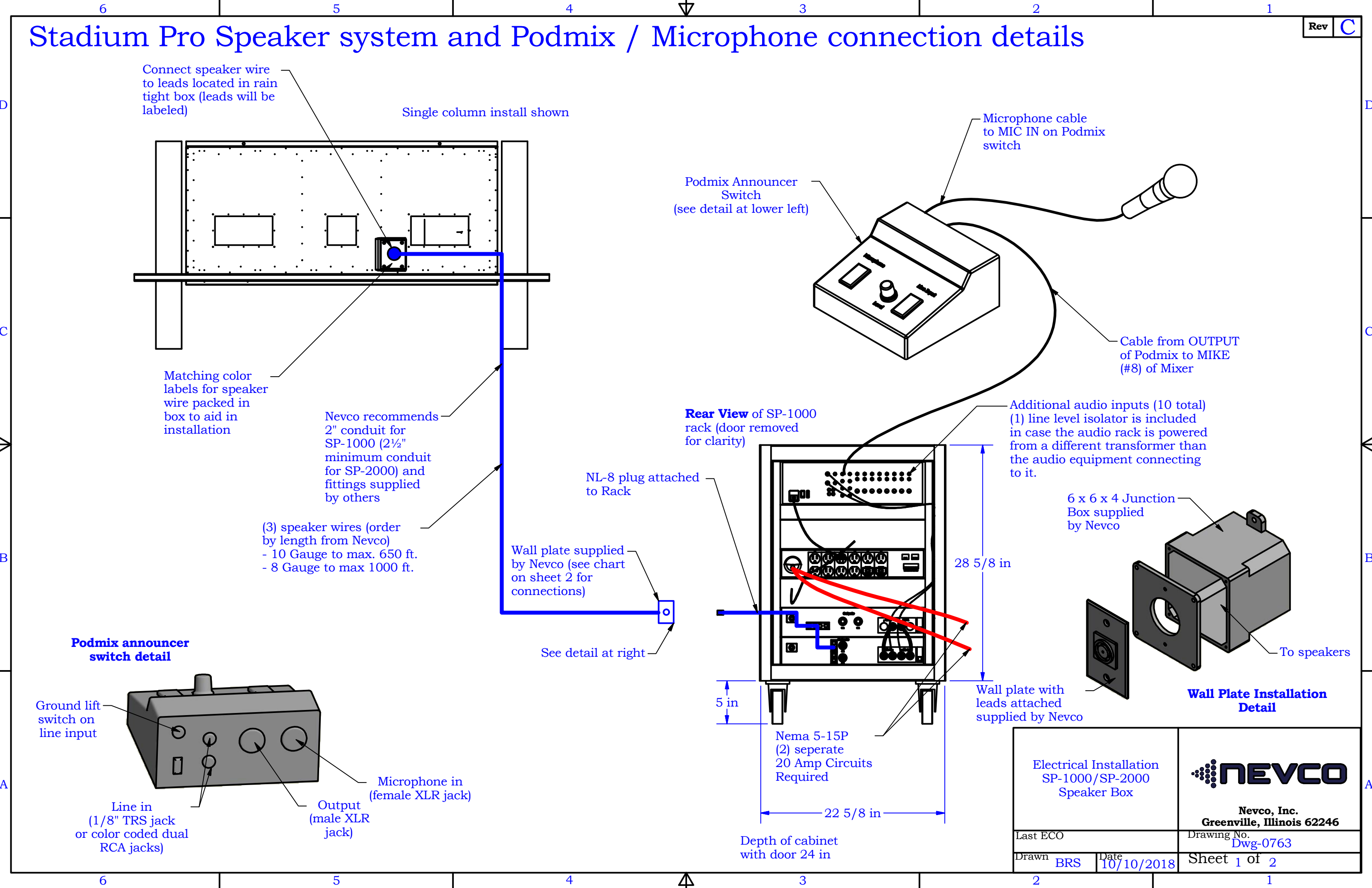


Stadium Pro Speaker system and Podmix / Microphone connection details

Rev C



Connect speaker wire to leads located in rain tight box (leads will be labeled)

Single column install shown

Podmix Announcer Switch (see detail at lower left)

Microphone cable to MIC IN on Podmix switch

Cable from OUTPUT of Podmix to MIKE (#8) of Mixer

Matching color labels for speaker wire packed in box to aid in installation

Nevco recommends 2" conduit for SP-1000 (2 1/2" minimum conduit for SP-2000) and fittings supplied by others

Rear View of SP-1000 rack (door removed for clarity)

Additional audio inputs (10 total) (1) line level isolator is included in case the audio rack is powered from a different transformer than the audio equipment connecting to it.

(3) speaker wires (order by length from Nevco)
 - 10 Gauge to max. 650 ft.
 - 8 Gauge to max 1000 ft.

NL-8 plug attached to Rack

Wall plate supplied by Nevco (see chart on sheet 2 for connections)

6 x 6 x 4 Junction Box supplied by Nevco

Podmix announcer switch detail

Ground lift switch on line input

Microphone in (female XLR jack)

Line in (1/8" TRS jack or color coded dual RCA jacks)

Output (male XLR jack)

5 in

Nema 5-15P (2) separate 20 Amp Circuits Required

Wall plate with leads attached supplied by Nevco

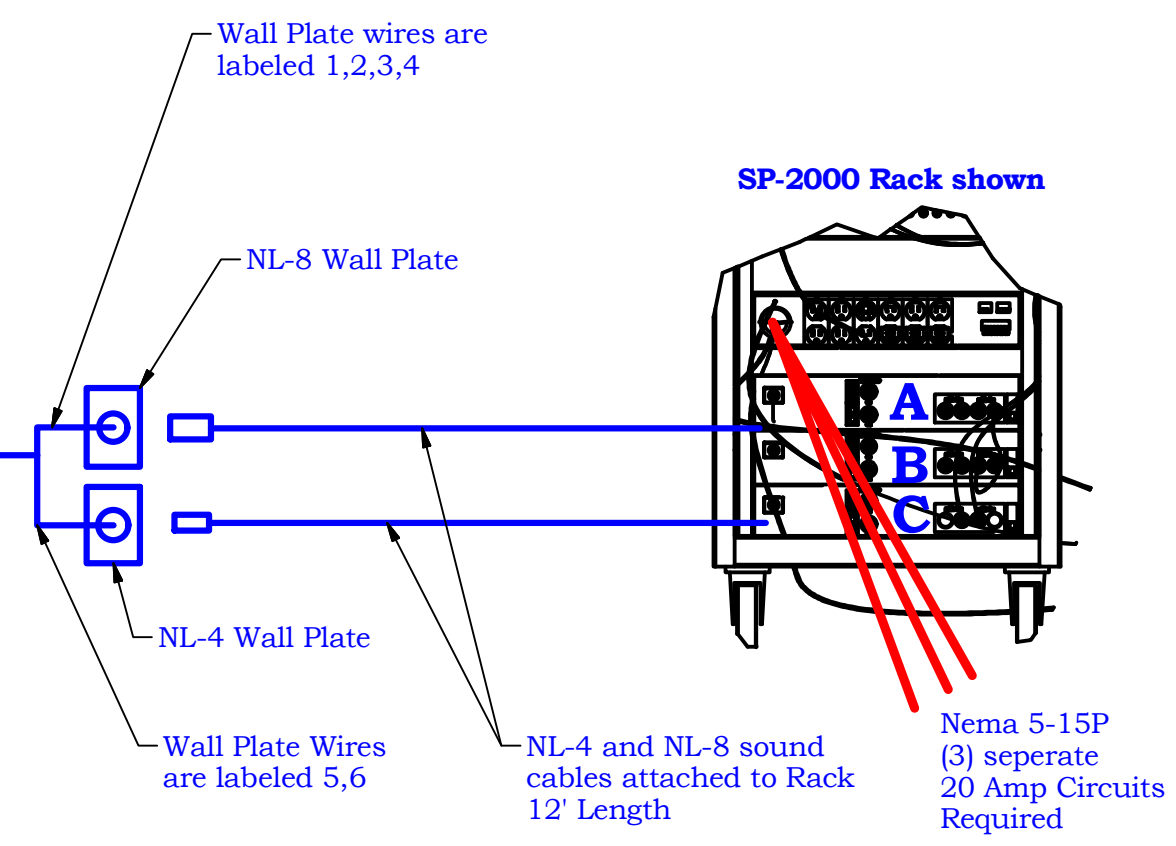
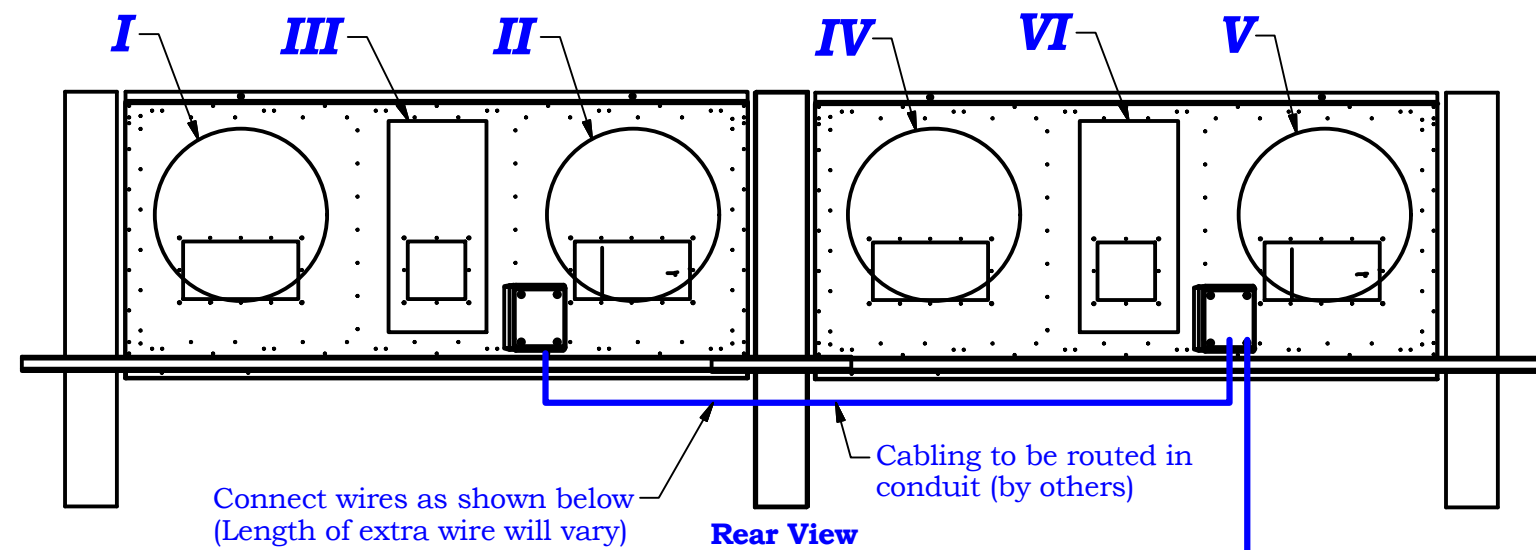
To speakers

Wall Plate Installation Detail

Depth of cabinet with door 24 in

Electrical Installation SP-1000/SP-2000 Speaker Box	
Last ECO	Drawing No.
Drawn BRS	Date 10/10/2018

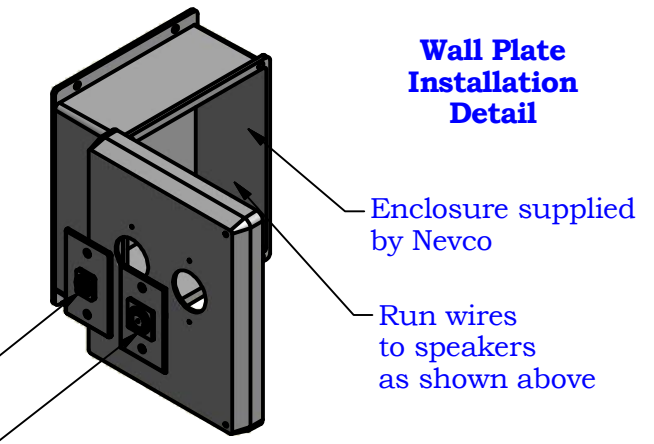
NEVCO	
Nevco, Inc. Greenville, Illinois 62246	
Drawing No. Dwg-0763	
Sheet 1 of 2	



Speaker Wire Connection Chart

Amplifier		Speaker			
Reference	Channel	SP-1000		SP-2000	
A	Ch 1	White +/-	M I , M II	White +/-	M I ,M V
A	Ch 2	Yellow +/-	H I , H II	Yellow +/-	H I ,H V
B	Ch 1	Orange +/-	III	Orange +/-	III
B	Ch 2			Purple +/-	VI
C	Ch 1			Green +/-	M II , M IV
C	Ch 2			Blue +/-	HII, HIV

Notes:
Speaker horns have high and midrange outputs - H = high, M = midrange



Electrical Installation SP-1000/SP-2000 Speaker Box			
Last ECO		Nevco, Inc. Greenville, Illinois 62246	
Drawn BRS		Drawing No. Dwg-0763	
Date 10/10/2018		Sheet 2 of 2	