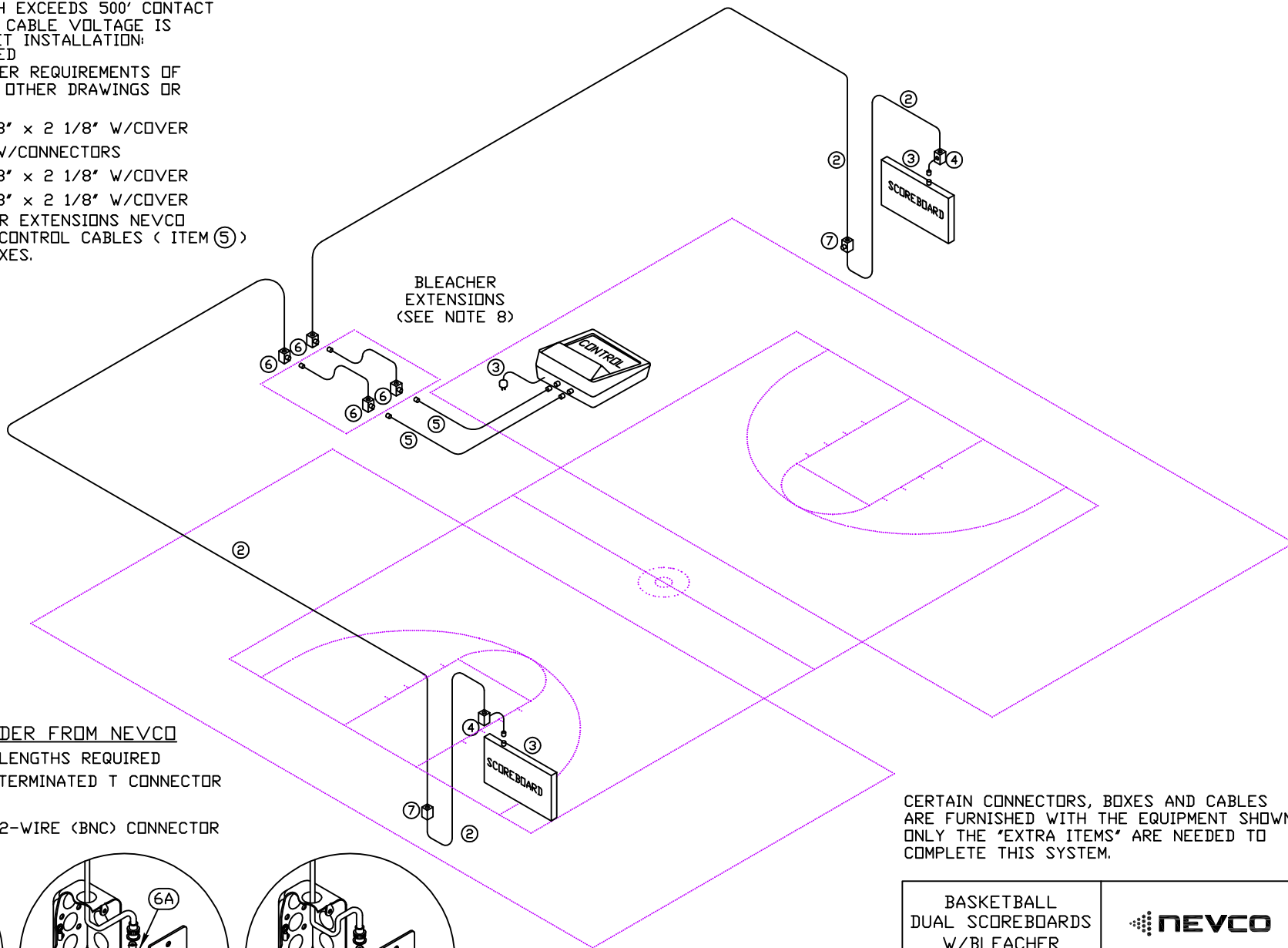


NOTES

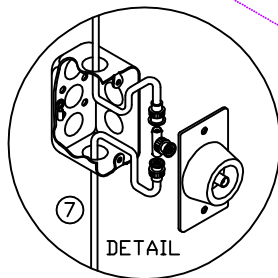
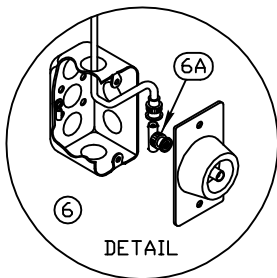
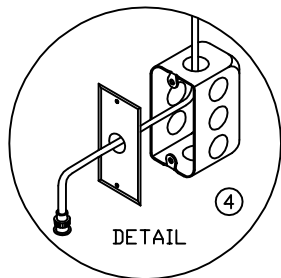
- ② CONTROL CABLE RG-58/U, 1/4" DIAMETER. IF ANY CABLE LENGTH EXCEEDS 500' CONTACT THE NEVCO FACTORY. CABLE VOLTAGE IS 5 VOLTS. FOR CONDUIT INSTALLATION: 1/2" CONDUIT REQUIRED
- ③ FOR ELECTRICAL POWER REQUIREMENTS OF EACH ITEM REFER TO OTHER DRAWINGS OR SPECIFICATIONS.
- ④ WALL BOX 4' x 2 1/8' x 2 1/8' W/COVER
- ⑤ CONTROL CABLE 25' W/CONNECTORS
- ⑥ WALL BOX 4' x 2 1/8' x 2 1/8' W/COVER
- ⑦ WALL BOX 4' x 2 1/8' x 2 1/8' W/COVER
- 8. INSTEAD OF BLEACHER EXTENSIONS NEVCO RECOMMENDS LONGER CONTROL CABLES (ITEM ⑤) OR USE OF FLOOR BOXES.




EXTRA ITEMS TO ORDER FROM NEVCO

- ② 009-0084 (6 EA.) LENGTHS REQUIRED
- ⑥A 210-0007 (4 EA.) TERMINATED T CONNECTOR
- ⑦ 239-0081 (2 EA.)
- 210-0008 (8 EA.) 2-WIRE (BNC) CONNECTOR

CERTAIN CONNECTORS, BOXES AND CABLES ARE FURNISHED WITH THE EQUIPMENT SHOWN. ONLY THE "EXTRA ITEMS" ARE NEEDED TO COMPLETE THIS SYSTEM.



BASKETBALL DUAL SCOREBOARDS W/BLEACHER EXTENSIONS & ALTERNATE CONTROL POINTS SYSTEM	 NEVCO, INC. GREENVILLE, ILLINOIS 62246
DRAWN HW	DATE 08/11/10
SHEET 1	OF 1