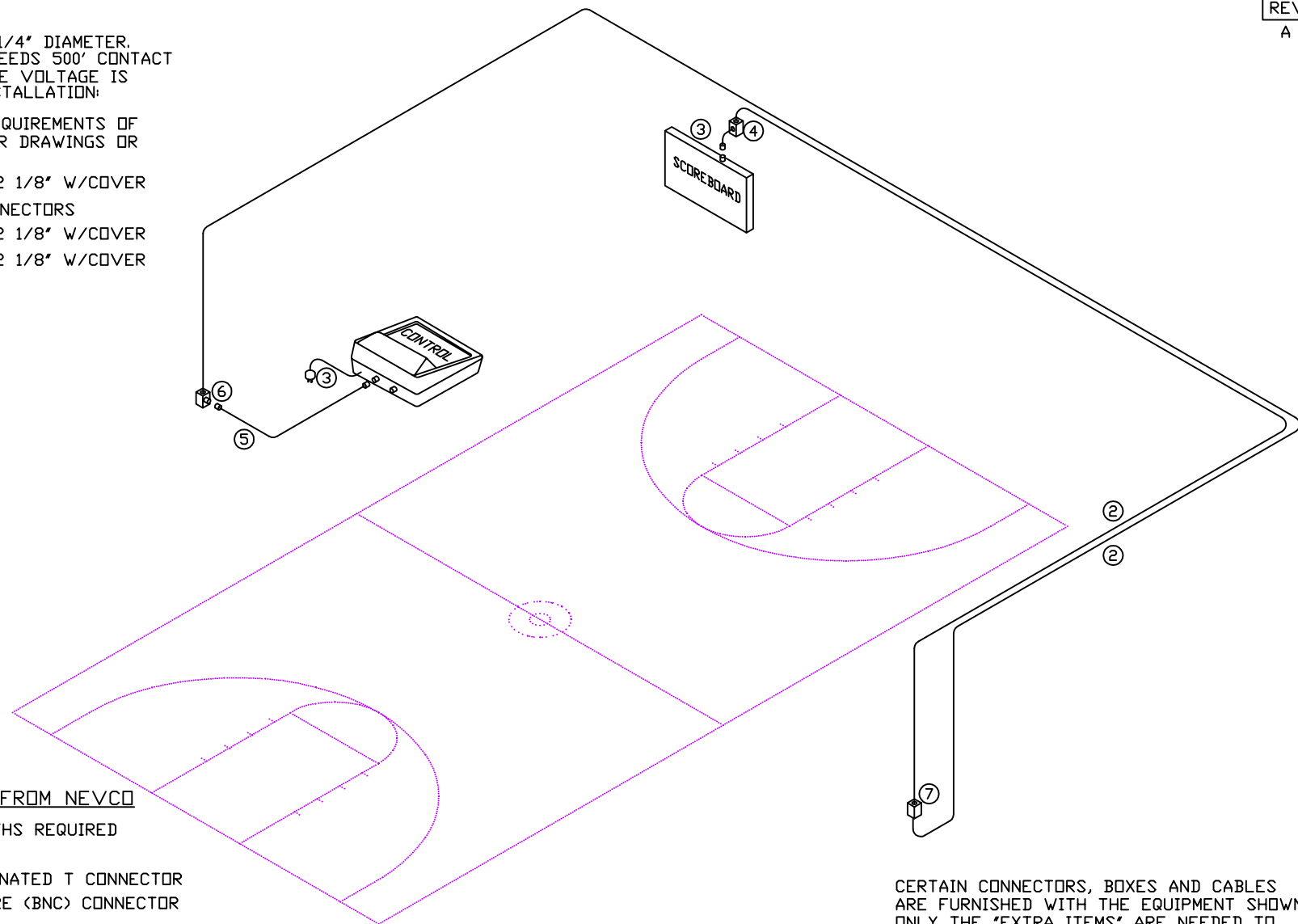


**NOTES**

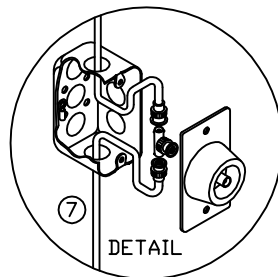
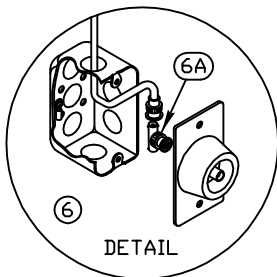
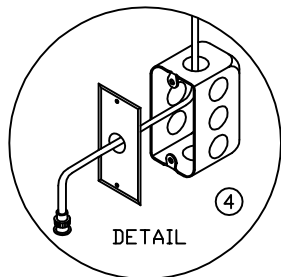
- ② CONTROL CABLE RG-58/U, 1/4" DIAMETER. IF ANY CABLE LENGTH EXCEEDS 500' CONTACT THE NEVCO FACTORY. CABLE VOLTAGE IS 5 VOLTS. FOR CONDUIT INSTALLATION: 1/2" CONDUIT REQUIRED
- ③ FOR ELECTRICAL POWER REQUIREMENTS OF EACH ITEM REFER TO OTHER DRAWINGS OR SPECIFICATIONS.
- ④ WALL BOX 4' x 2 1/8' x 2 1/8' W/COVER
- ⑤ CONTROL CABLE 25' W/CONNECTORS
- ⑥ WALL BOX 4' x 2 1/8' x 2 1/8' W/COVER
- ⑦ WALL BOX 4' x 2 1/8' x 2 1/8' W/COVER




**EXTRA ITEMS TO ORDER FROM NEVCO**

- ② 009-0084 < 2 EA. > LENGTHS REQUIRED
- ⑦ 239-0081 < 1 EA. >
- ⑥A 210-0007 < 1 EA. > TERMINATED T CONNECTOR
- 210-0008 < 2 EA. > 2-WIRE (BNC) CONNECTOR

CERTAIN CONNECTORS, BOXES AND CABLES ARE FURNISHED WITH THE EQUIPMENT SHOWN. ONLY THE "EXTRA ITEMS" ARE NEEDED TO COMPLETE THIS SYSTEM.



BASKETBALL SINGLE SCOREBOARD W/ALTERNATE CONTROL POINTS SYSTEM		 NEVCO, INC. GREENVILLE, ILLINOIS 62246
DRAWN HW		
DATE 08/11/10	SHEET 1 OF 1	